



Our heritage makes us unique.  
Our commitment sets us apart.

## Who is Akima?

A company born in one of the most **remote corners** of the globe is now powering some of the most **critical, cutting-edge** work performed in the **federal government**.



**\$1.6 Billion**

Global Enterprise



**8,000+**

Employees



**45+**

8(a) Companies, Small  
Businesses & Operating  
Companies



**Global Impact**

Akima operates  
throughout the U.S.  
and around the world



**2,000+**

Active Contracts  
& Task Orders



**Ranked #28**

Amongst the Top 100  
Government Contractors  
by Washington Technology

### Core Mission

Enabling superior outcomes for our customers' missions while creating a long-lived asset for NANA consistent with our Iñupiat values.

Headquartered in

**Herndon, VA**



## Industry Certifications

ISO 9001:2015 | ISO 20000-1 | AS9100D | AS910C | CMMI V1.3 Level 3 | CMMI V2.0 Level 3

**Over 100+**

Technology Partnerships

**84**

Safety Certifications

**250**

Quality & Operational  
Excellence Certifications

**1,200**

Technical Certifications

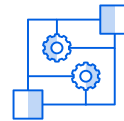
## Capabilities



Facilities, Maintenance  
& Repair



Protective  
Services



Systems  
Engineering



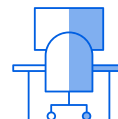
Construction



Logistics  
& Supply Chain



Information  
Technology



Furniture, Fixtures  
& Equipment



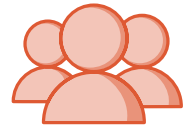
Mission  
Support

# Our History

Akima is a subsidiary of **NANA—1 of 12** corporations founded through the **Alaska Native Claims Settlement Act**.

## The NANA Region

Comprised of **11 villages**



Home to the **Iñupiat** for more than **10,000 years**



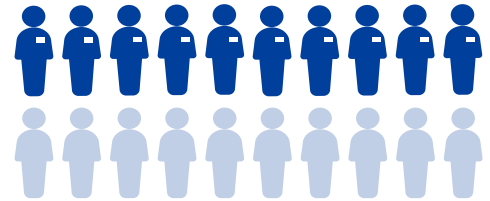
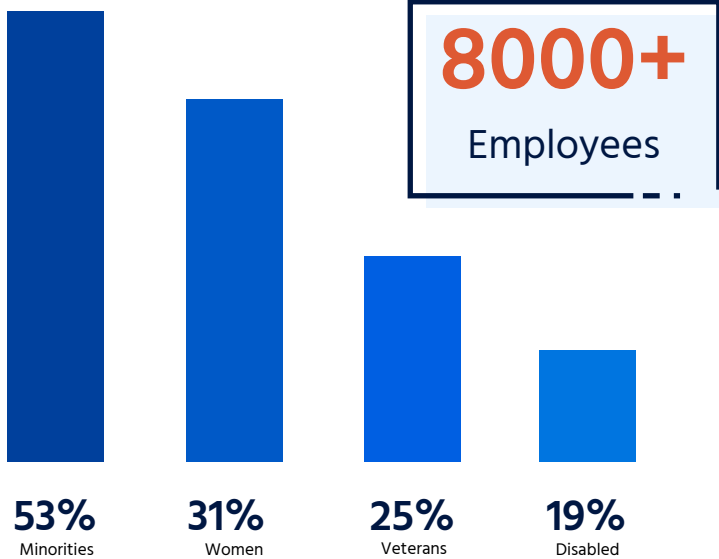
Encompasses more than **23 million acres**, mostly above the Arctic Circle

# Iñupiat Values Guide Everything We Do

- 1** **Honesty** and **integrity** govern our activities
- 2** **Commitments** made will be **fulfilled**
- 3** **Everyone** will be treated with **dignity** and **respect**

# Our Employees

The foundation upon which Akima is built



**64%**

of the workforce holds a government security clearance

# Our Commitment

Our success comes from our people. We celebrate that success by **giving back** in the **NANA region** and the **communities** where we **live and work**.

- Direct Assistance Programs
- Social & Cultural Preservation
- Education
- Fundraisers

